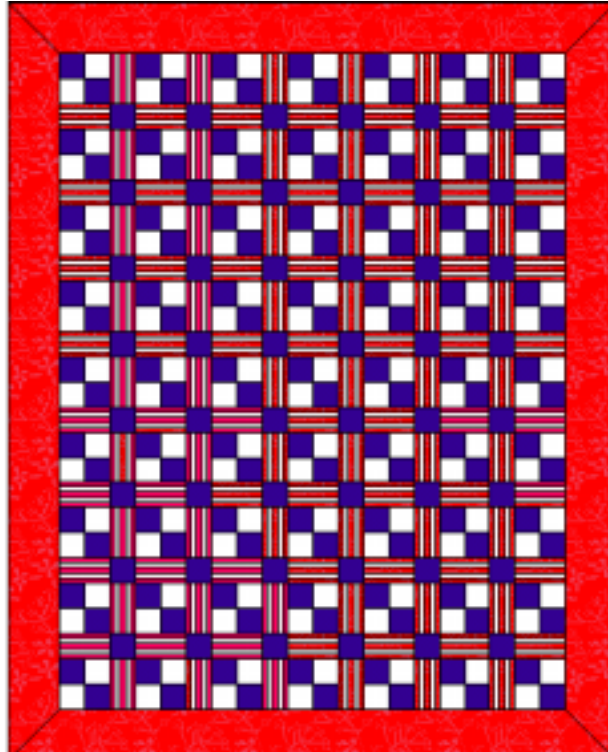


PATRIOTIC FOUR PATCH

48" X 60"

Reproduction of an antique quilt



Fabric Requirements

1 yd. Blue fabric

$\frac{3}{4}$ yd. White fabric

2 yd. Red and White Striped fabric, a small stripe

2 yd. Red Fabric

Pre-wash and iron all fabrics.

Cutting Instructions:

4 Patches: Cut 8(eight) 2 1/2" strips from the width of both the blue and white fabrics

Corner Stones: Cut 3 2 1/2" strips from the width of the blue fabric, sub-cut each strip into 2 1/2" squares. 48 squares total

Sashing: Cut 2 1/2" strips from the red and white stripe, so that the stripe runs the length of the strip of fabric. Sub-cut each strip into 4 1/2" segments. 110 2 1/2" x 4 1/2" strips

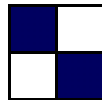
Borders: Cut 2 strips of second red fabric, 4 1/2" X 48" + a few inches extra to allow for mitering. Cut 2 strips of this same red fabric, 4 1/2" X 60" + a few extra inches to allow for mitering.

Piecing Instructions

4 Patches: Join one strip of blue and one strip of white fabric, lengthwise, using a 1/4" seam. Press the seam toward the dark. Cut this strip into 2 1/2" segments. 96 2 1/2" X 4 1/2" segments total



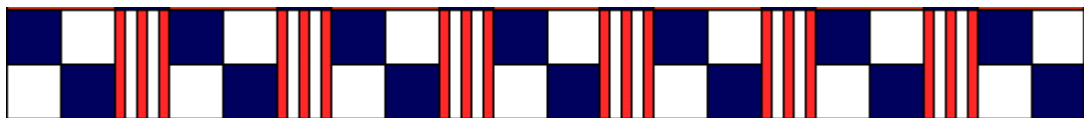
Join 2 segments together, being careful to oppose light and dark sections. 48 blocks total



4 Patch Rows: Join one 4 Patch to a sashing strip.



Continue joining 4 patches to sashing until the row contains 7 4 Patches and 6 sashing strips. Make 9 rows total



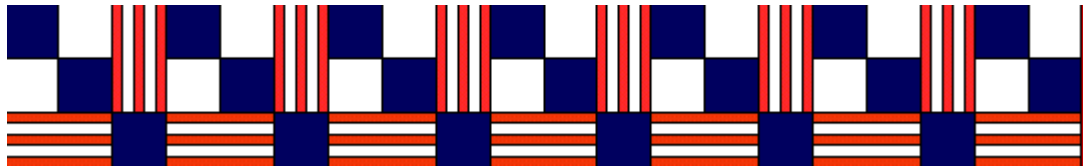
Sashing-Cornerstone Rows: Join sashing strip to a cornerstone.



Continue joining sashing strips to cornerstones until the row contains 7 sashing strips and 6 cornerstones. Make 8 rows total



Join rows, placing a 4 Patch row, then a sashing/corner stone row.



Be careful to match intersections.

Borders – sew the top and bottom border strips to the top. Sew the side border strips to the top. Use your favorite mitering technique to miter the corners of the border.

Caution:

Care should be taken throughout construction of this quilt to sew accurate $\frac{1}{4}$ " seams. Wavy seams will be accentuated by the striped fabric. For this reason, we recommend that the outside border fabric not be a striped fabric.